



The Journey of Water from farm to fridge



Sue Viljoen, WWF-SA



SUSTAINING
ECOSYSTEMS
THROUGH
RESPONSIBLE
BUSINESS PRACTICES



Squeezed on all fronts....



Water has been in the headlines in SA for all the wrong reasons ☹️

X Failing water supplies



X Failing infrastructure

South Africa

R700bn needed for SA water infrastructure

Water demand seen outstripping supply

SA cities lose 37% of water supply through leaks

X Failing governance

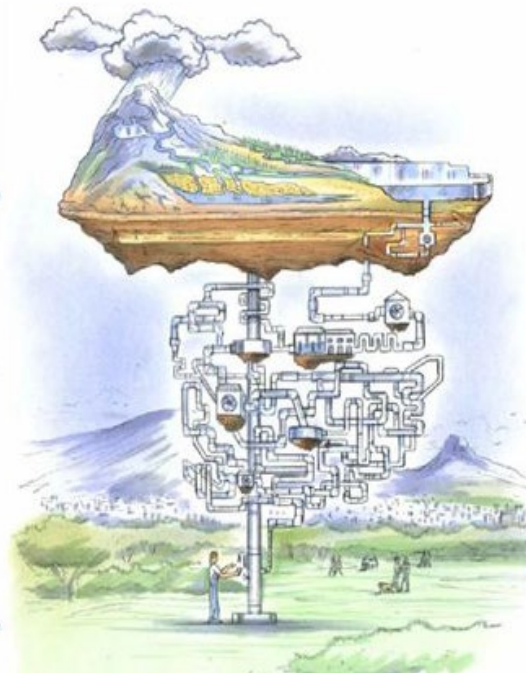
Leaving a department that has completely collapsed – the case against Nomvula Mokonyane

So where does your water come from?



Ecological Infrastructure
R??

Engineered Infrastructure
R700 billion price tag
for next 10 years



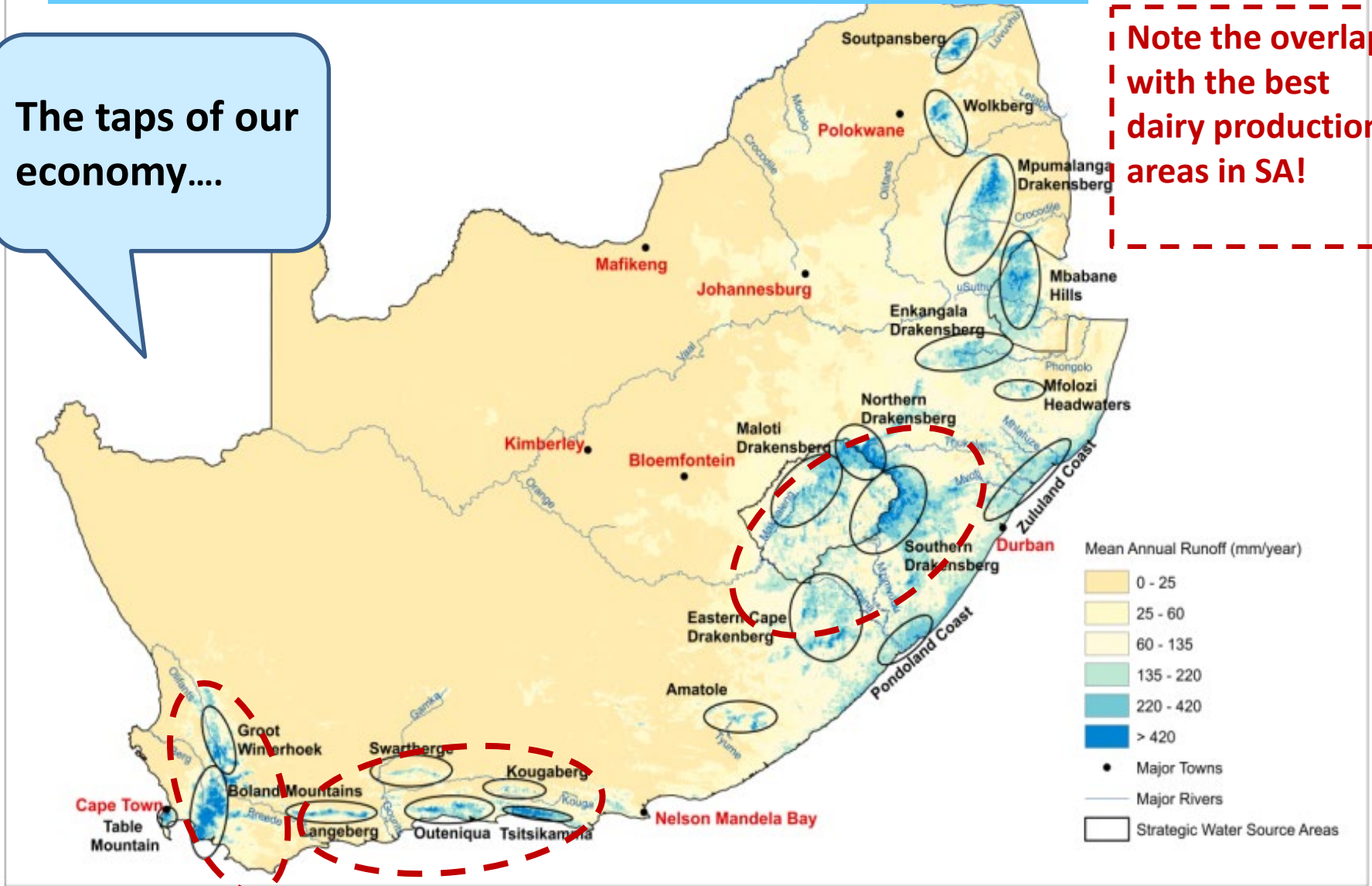
- Areas which produce disproportionately greater volumes of surface water runoff per unit area than other areas
- (due to climatic conditions, topography or type of soil & underlying parent material)
- **Source of our major rivers**

WATER SOURCE AREAS!

Our most NB natural national assets

The taps of our economy....

Note the overlap with the best dairy production areas in SA!



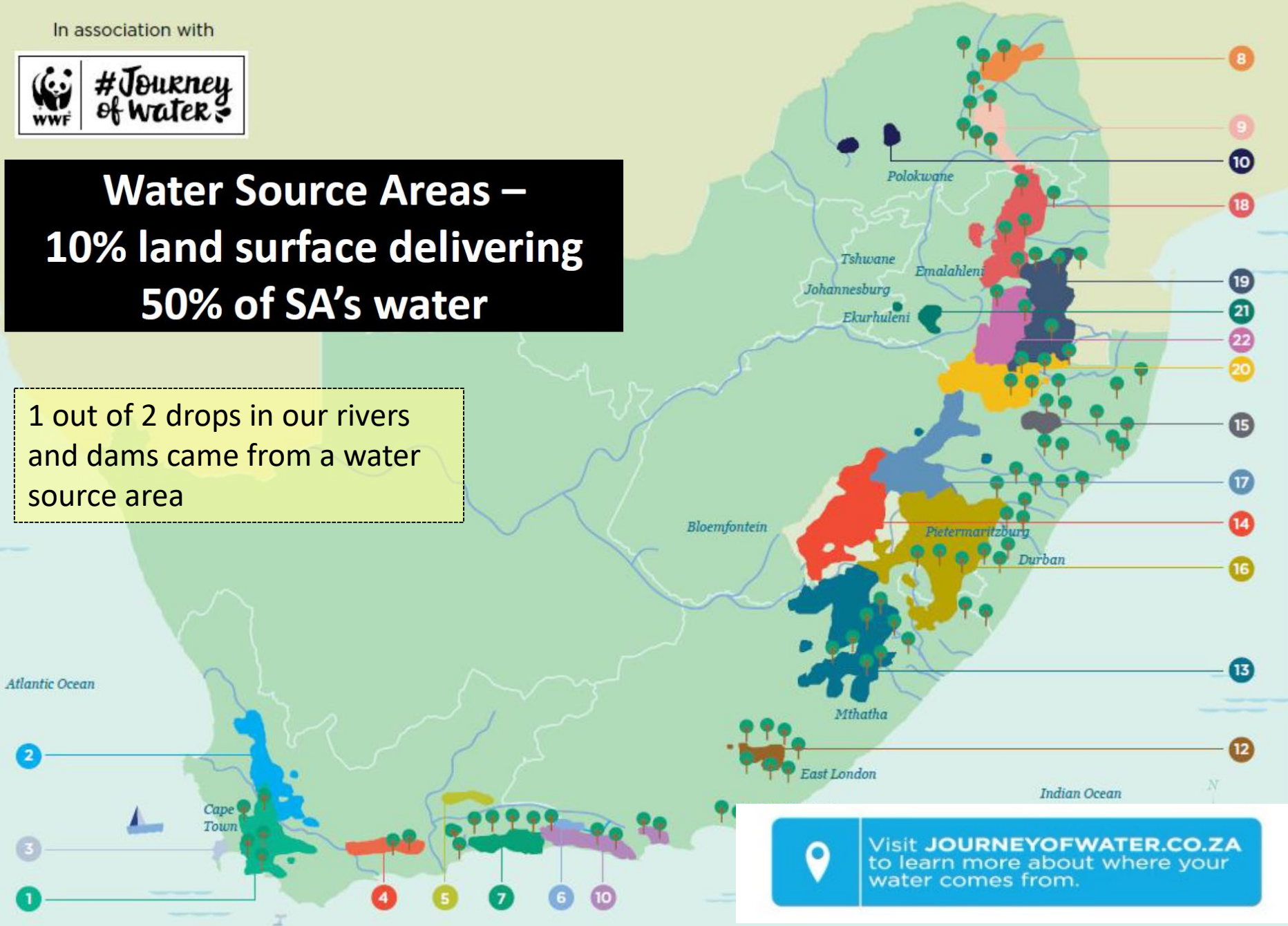
In association with



#Journey of Water

Water Source Areas – 10% land surface delivering 50% of SA's water

1 out of 2 drops in our rivers
and dams came from a water
source area

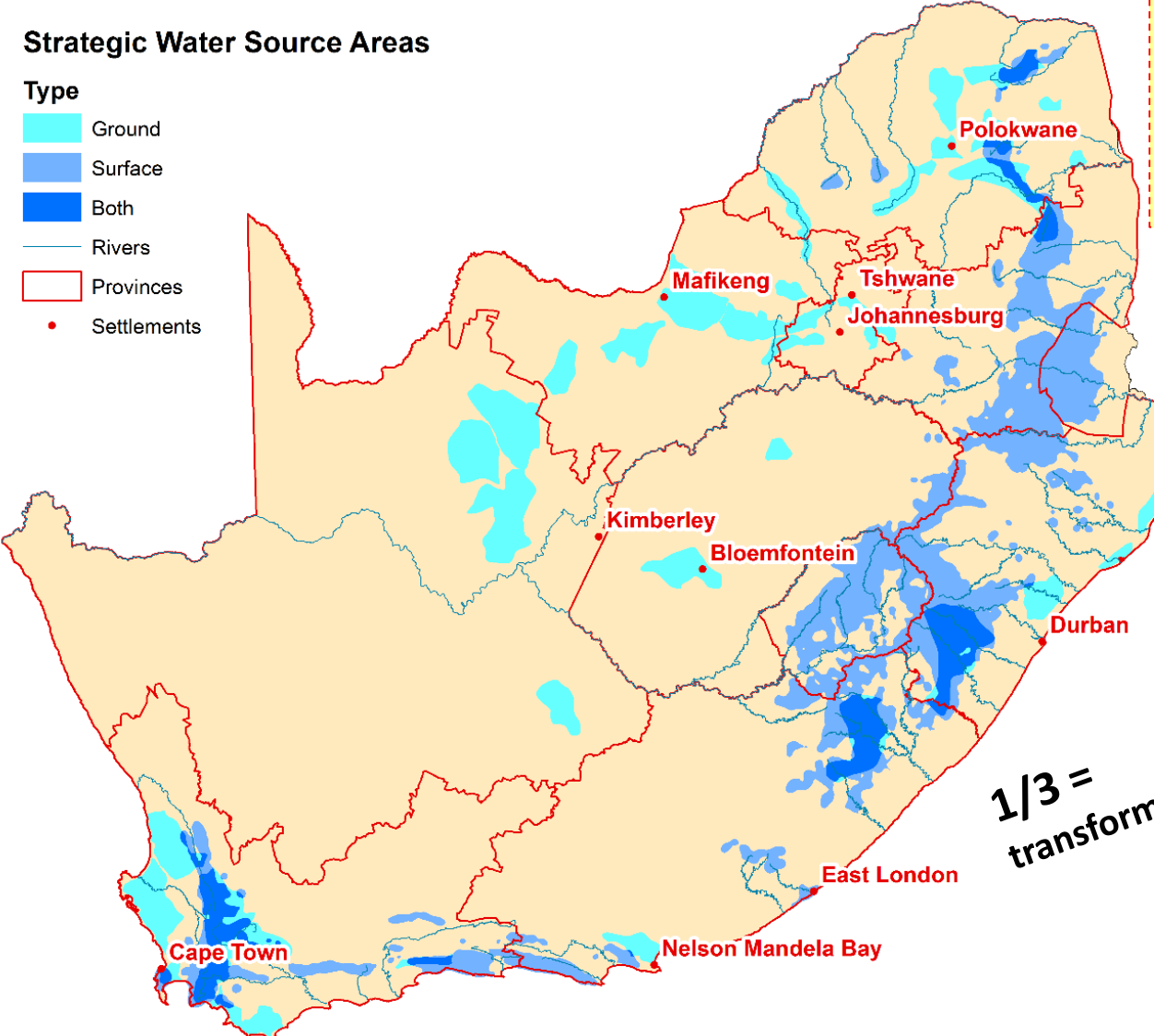


Visit JOURNEYOFWATER.CO.ZA
to learn more about where your
water comes from.

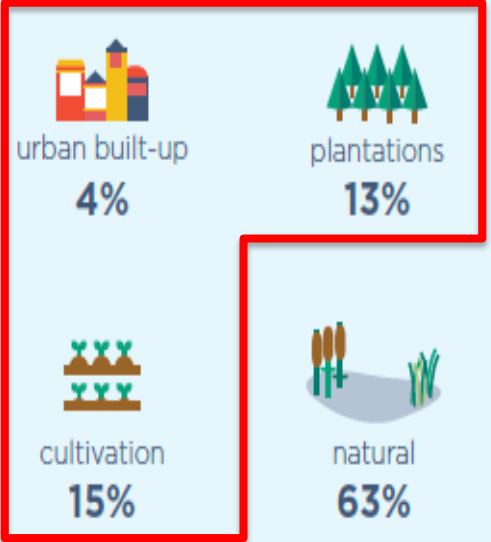
Landuse in Water Sources Areas

Strategic Water Source Areas

- Type
- Ground
 - Surface
 - Both
 - Rivers
 - Provinces
 - Settlements



**** Your facility's water risk is linked to the landuse practices and condition of your water source areas ****



1/3 = transformed

LAND-USE ACROSS WATER SOURCE AREAS

Water scarcity isn't the only form of water risk!

3 types of water-related risks



Physical



Reputational



Regulatory

Financial Risk & bottom line impact



www.waterriskfilter.org

Explore...Assess...Value...Respond
From water risk assessment to response

The screenshot shows the website's header and main content area. The browser address bar displays 'Not secure | waterriskfilter.panda.org'. The navigation menu includes 'Water Risk Assessment', 'Mitigation', 'Maps', 'Country Profiles', and 'Knowledge Base'. A large banner features a landscape image and the text 'NOW AVAILABLE: Higher resolution data for South Africa' with a 'Learn more here' link. A sidebar on the right contains three featured articles with images and titles: 'Plot your company on interactive maps', 'Assess your water risk in Great Britain with local data', and 'Assess your water risk in South Africa with local data'. The footer includes a 'START RISK ASSESSMENT' button and social media icons for Facebook, Twitter, LinkedIn, and Google+.

Not secure | waterriskfilter.panda.org

Hoofcare email | AWS Webtool | Online Banking | WWF Intranet

THE WATER RISK FILTER

EN ES CH PT | Welcome, Guest | Log in

PRODUCED IN COLLABORATION WITH KFW DEG

Water Risk Assessment | Mitigation | Maps | Country Profiles | Knowledge Base

NOW AVAILABLE: Higher resolution data for South Africa
Learn more here

Plot your company on interactive maps

Assess your water risk in Great Britain with local data

Assess your water risk in South Africa with local data

START RISK ASSESSMENT

f t in g+

What is water stewardship (WS)?

WS involves:

- A progression of increased **improvement of water use**
 - **A reduction in water related impacts** (of internal & value chain operations)
 - And, a **commitment to collective action** with other business, governments, NGO's & communities in order to manage our shared water resources
- WWF definition

Water Stewardship requires you to:

- **Look upstream**
- **Look within**
- **Look downstream**

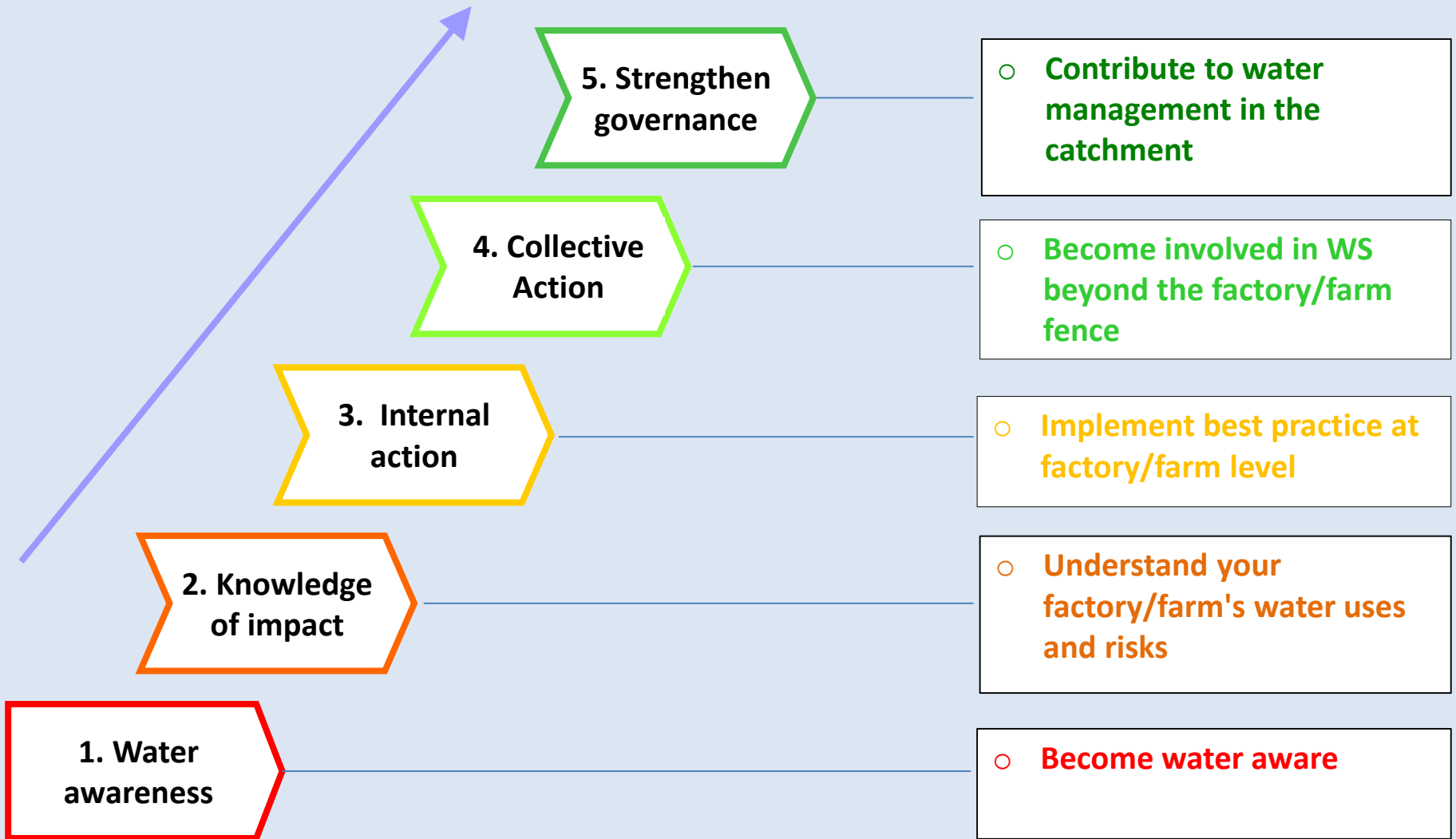


ALLIANCE FOR
WATER STEWARDSHIP

www.a4ws.org

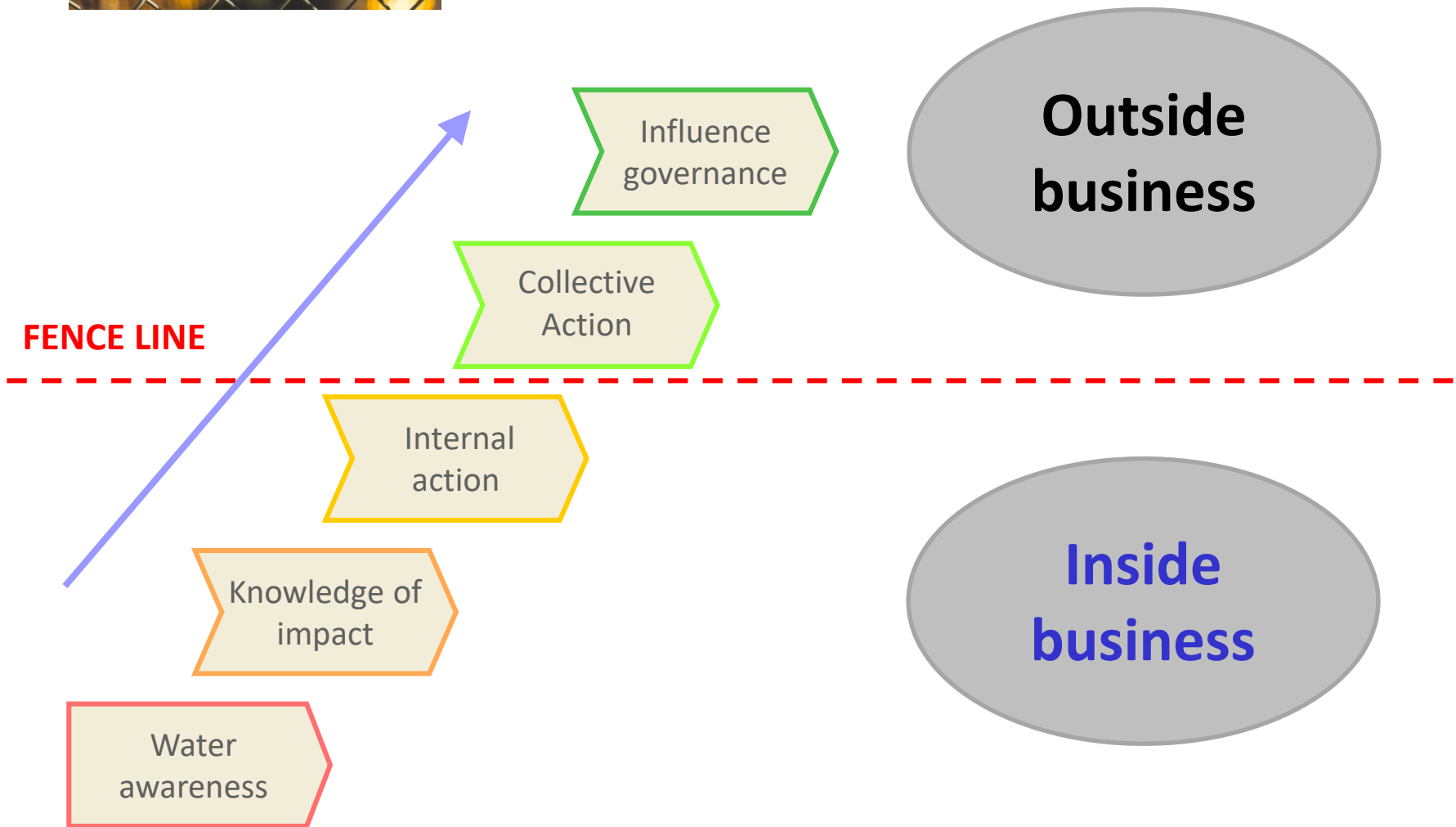
WWF Water stewardship ladder –

5 steps of a water stewardship journey.

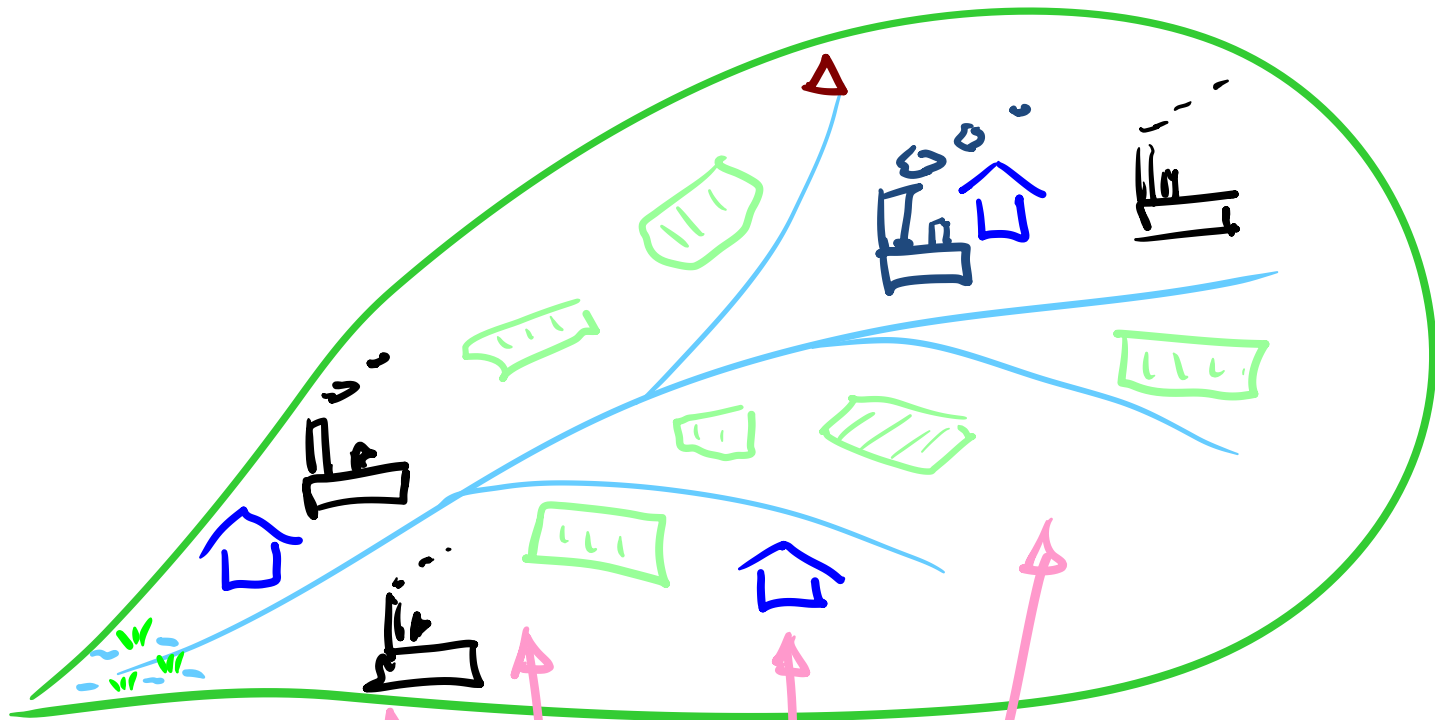




The fence line divide....



Stewardship means 'beyond efficiency' & looking after what you don't own



Your biggest water risks could lie beyond the fence!!

Supply chains

WS is a vested business interest!

Who stands to lose?



Shared risks + Shared value = **Shared action**

What is YOUR stewardship story?

- Catering for the millennials & concerned consumers
- Can your story **create value** for shareholders, staff and customers? (CSV)



- Find out more about your catchment context

Dairy Industry Water Stewardship Working Group

- Cross-cutting value chain collaboration, first of its kind. (9 organisations)
- Estab. in Aug 2018 with WWF acting as neutral convenor.
- **Purpose: To foster collaboration and learning on WS & strengthen self regulation in a non-competitive safe space**



What's the next step for the industry?

How do we compare to other sectors?



How does SA dairy compare to other sectors?

Forestry - FSC



Pork – “Pork 360”



Sugar - SUSFARMS



Fruit – SIZA

(Sustainability Initiative of South Africa)



Dairy - ????

Calling for value chain collaboration



- Water security is too important to be left to government alone!
- The private sector can lead the way
- All links along the value chain need to collaborate
- The days of cheap and unlimited supply of water are over
- Added pressures of land issues & water allocation reform
- Only solution is strengthened self regulation and collective action
- The opportunity is ripe!



IDF WORLD DAIRY SUMMIT
2020