

# Environmental Stewardship

A Perspective on Sustainability in the South African Dairy Industry



Colin Ohlhoff

South African Society of Dairy Technology Symposium

24<sup>th</sup> March 2022





**Voluntary**



# What on Earth should we be worried about?

“Identify the most severe risks on a global scale over the next 10 years”

■ Economic ■ Environmental ■ Geopolitical ■ Societal ■ Technological



Source: World Economic Forum Global Risks Perception Survey 2021-2022

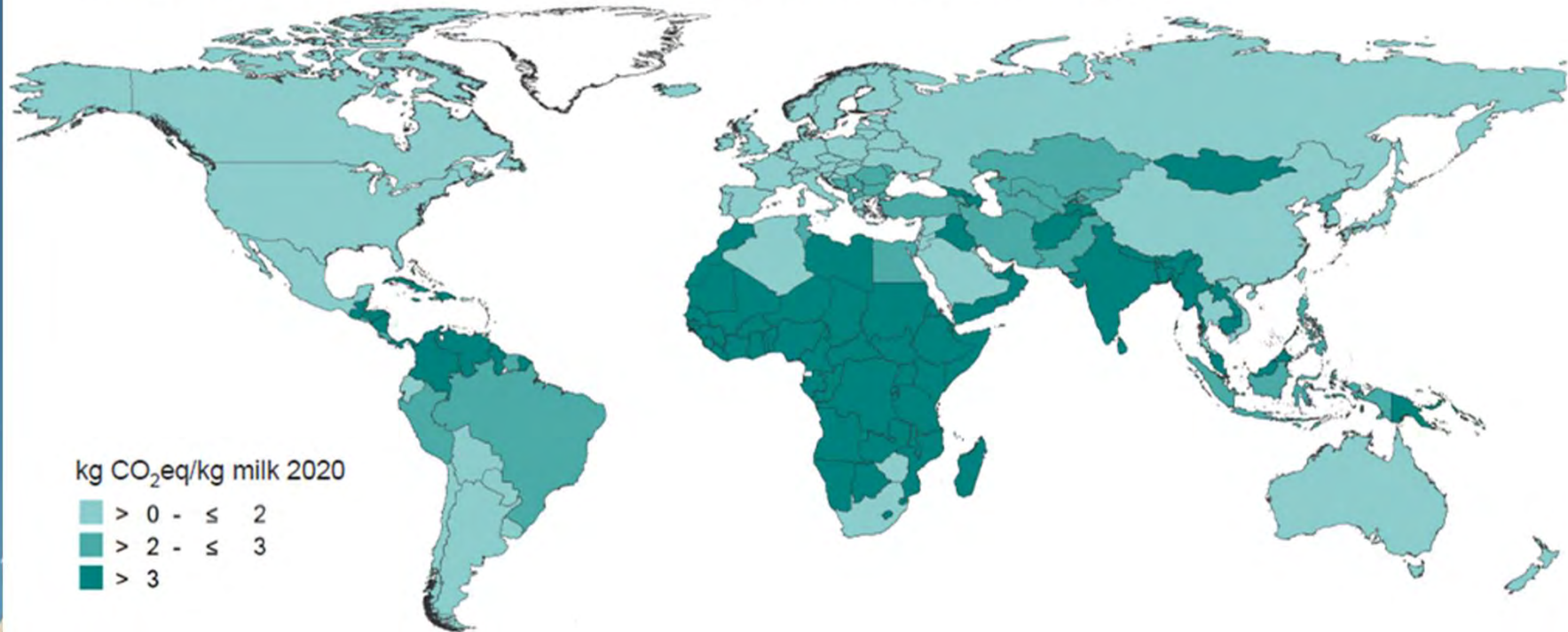




# Efficiency in Dairy Production

## GHG Emissions per kg Milk

High emissions per kg milk are in countries with low milk yields



Sources: IFCN 2020; GHG estimation based on IFCN regression function between milk yield and CO<sub>2</sub>eq emissions on typical farms.

# Dairy Sustainability Framework Criteria

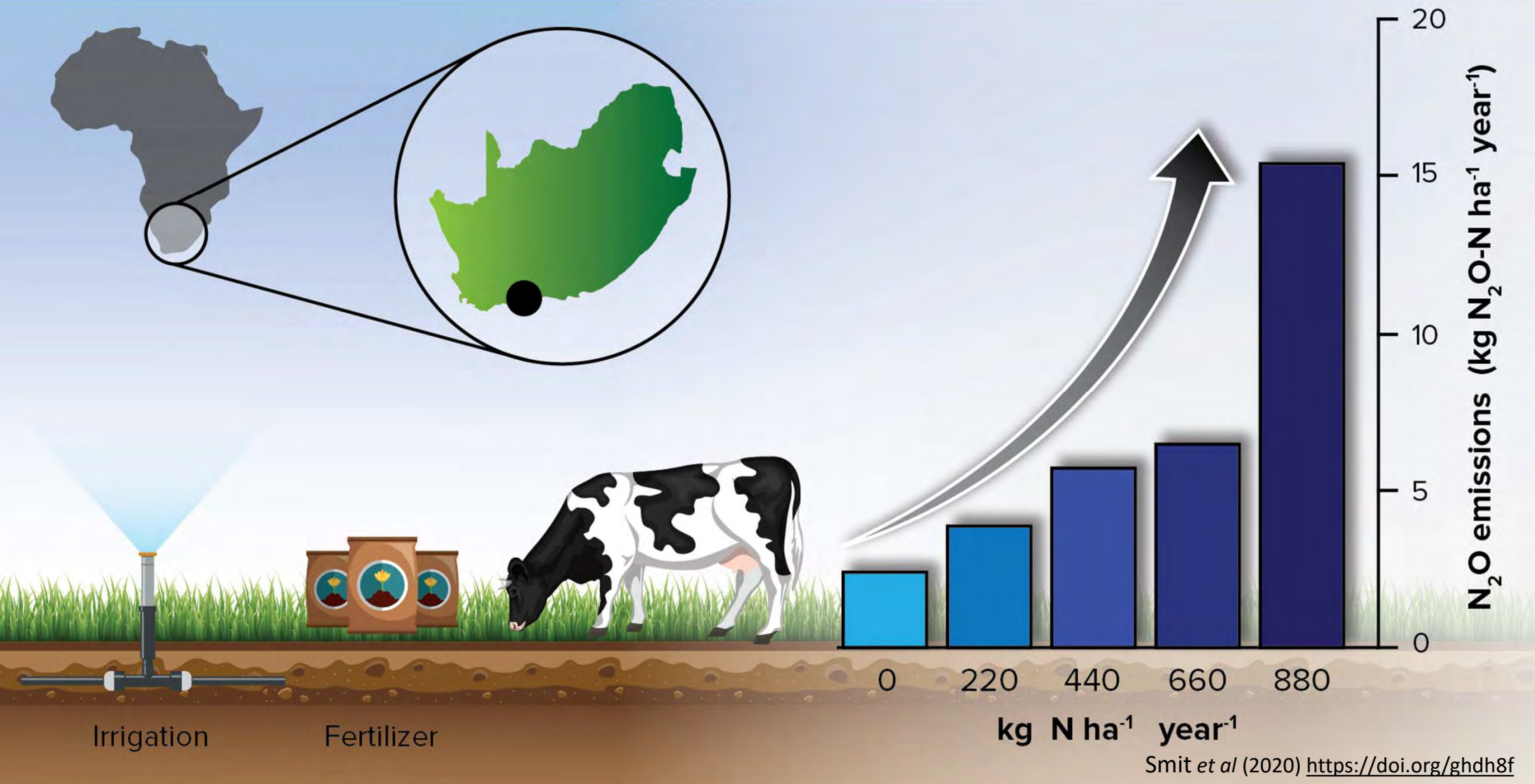


# Dairy Sustainability Framework Criteria



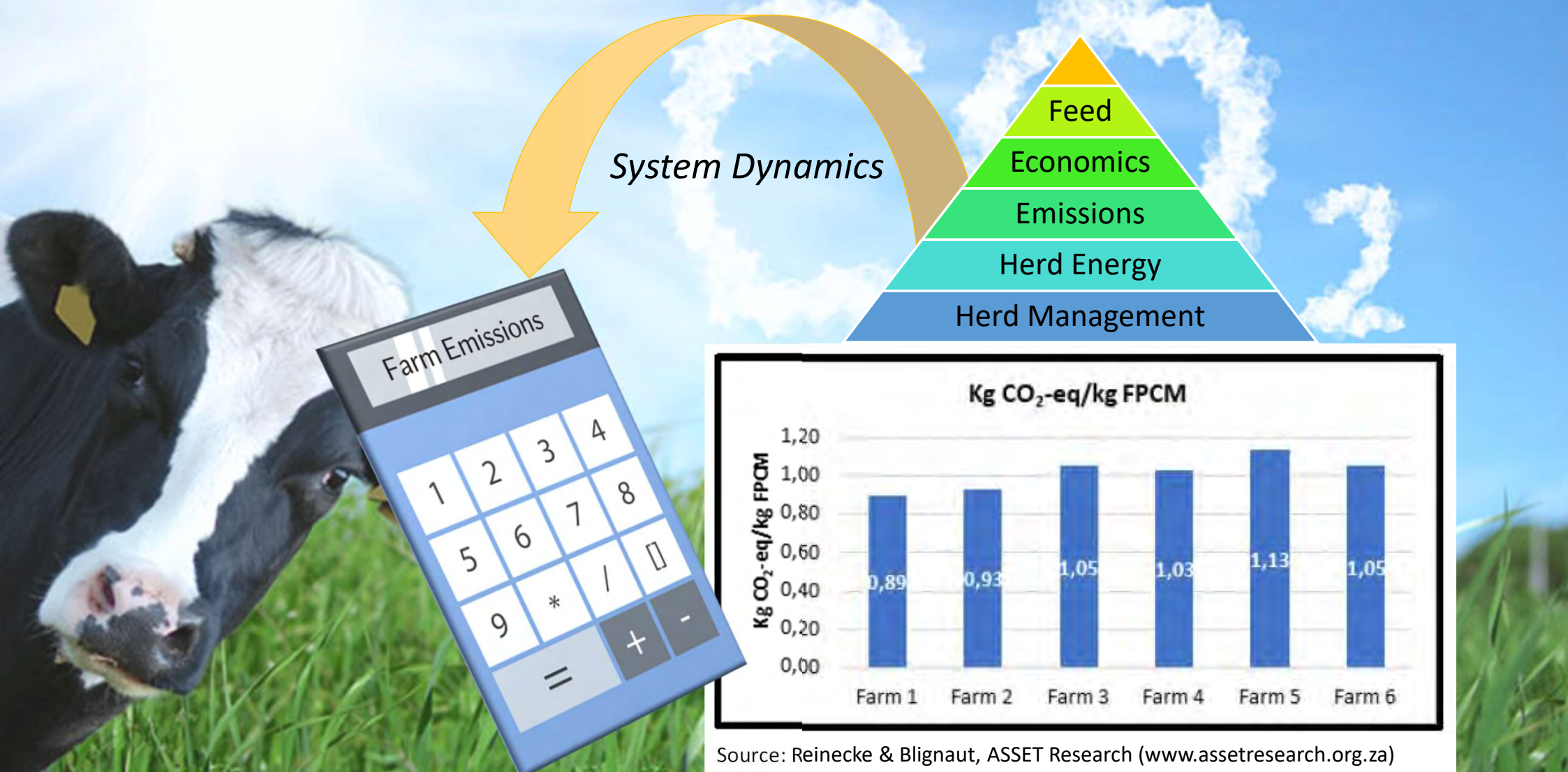


# GHG Emissions Research





# GHG Emissions Research



Source: Reinecke & Blignaut, ASSET Research ([www.assetresearch.org.za](http://www.assetresearch.org.za))

# Regenerating Soils

Biological  
Diversity

Food  
Production

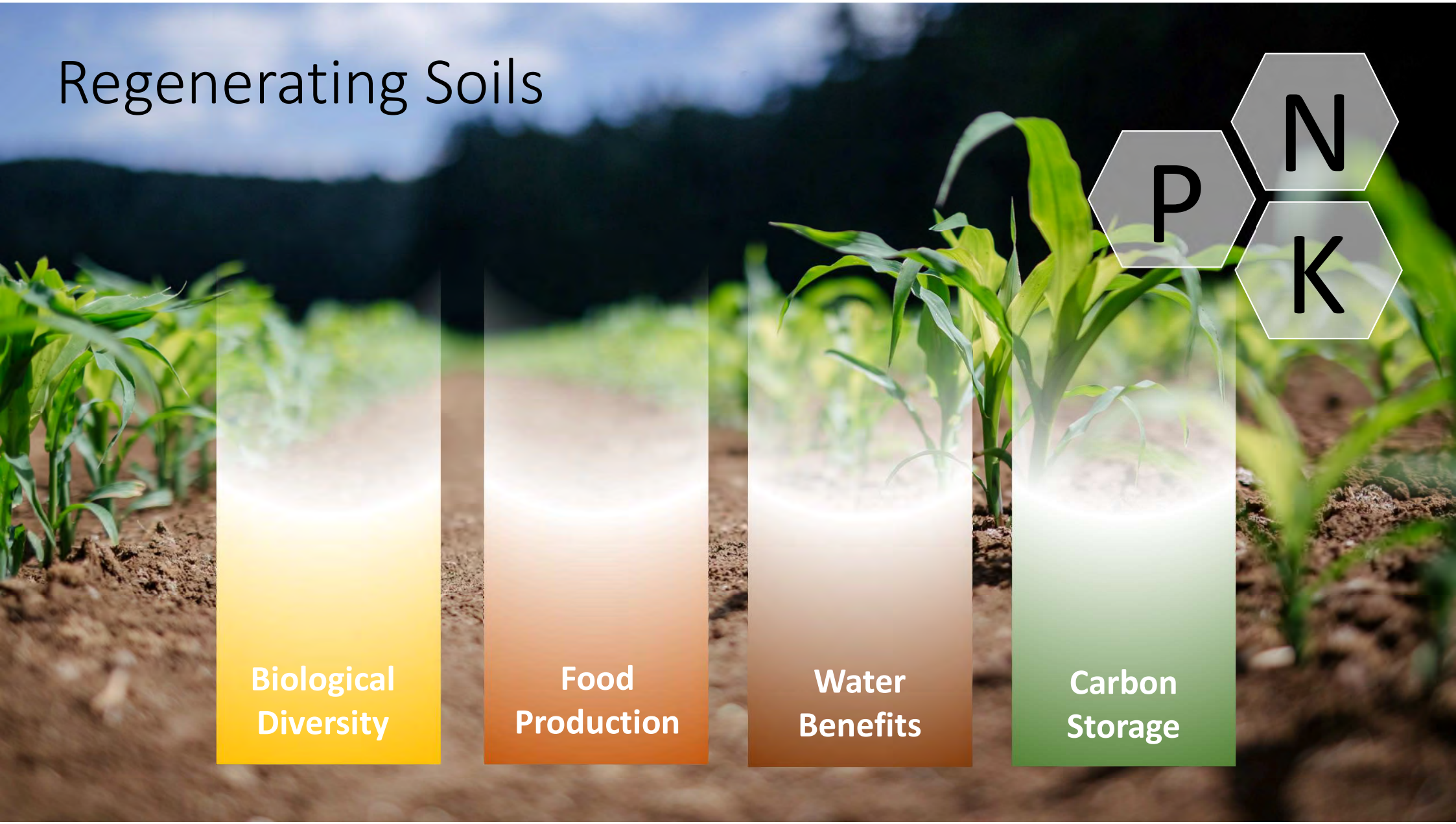
Water  
Benefits

Carbon  
Storage

P

N

K





# Water Availability



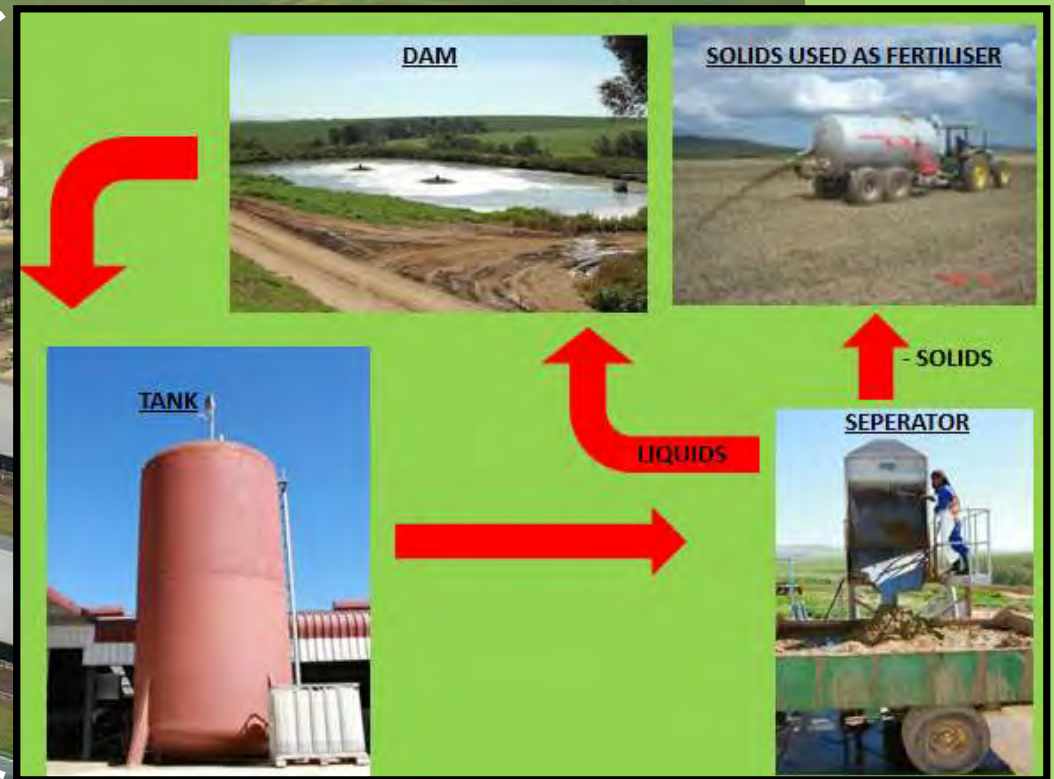
*Water stewardship working group*



Source: Sue Viljoen, WWF



# Closing the Loop: Water Recycling



Saving

**± 120,000 L**

Water per day



# Handling Our Waste

....from farm



.... to consumer









Thank you

